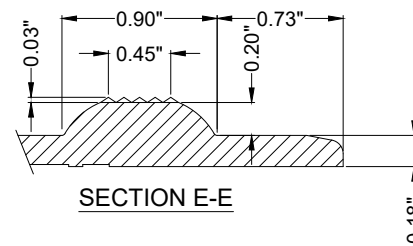
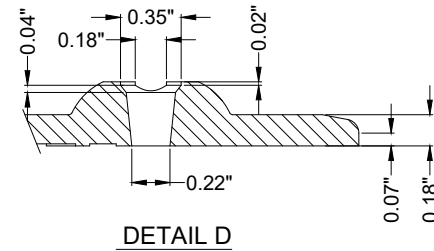
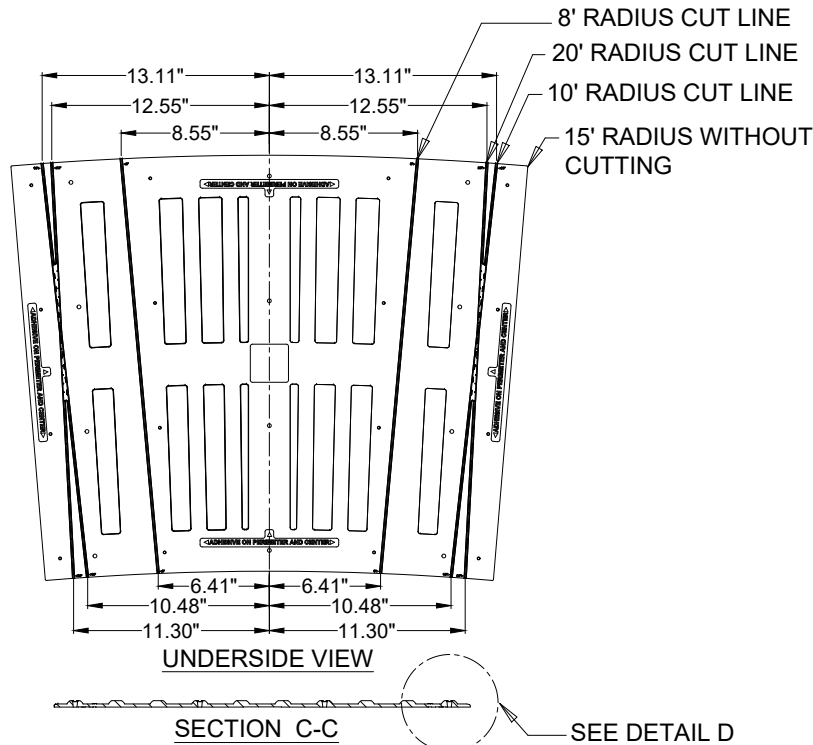
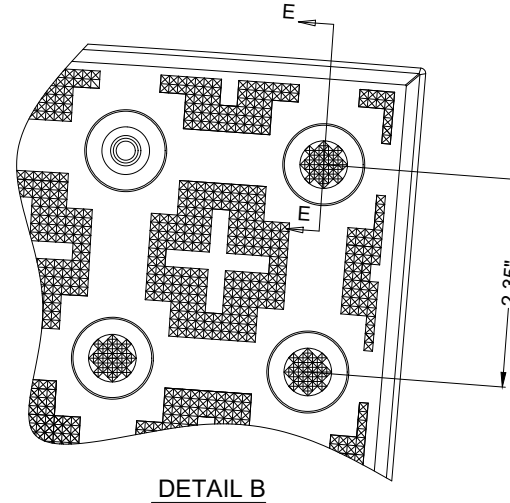
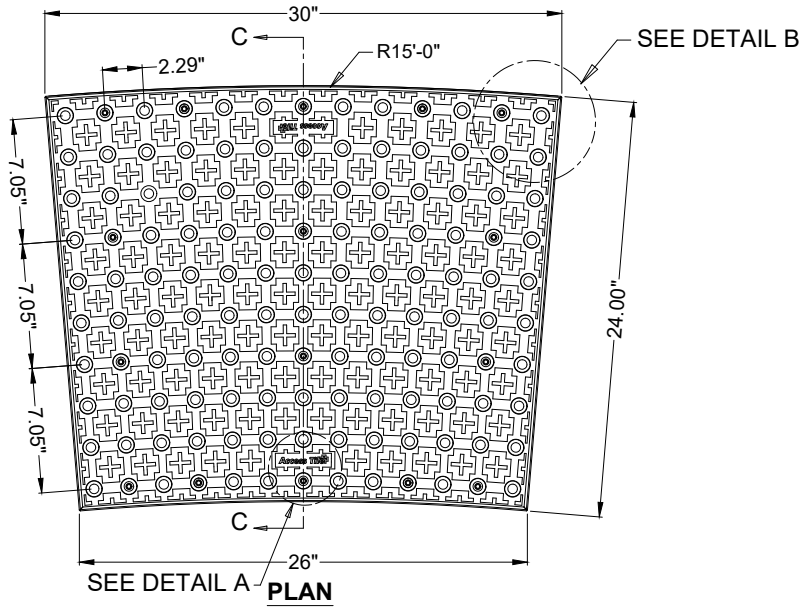


RADIUS

SURFACE APPLIED RADIUS TILE 2.35" DOME SPACING



DETAIL A

surewerx.com



MATERIAL LIST

ITEM	DESCRIPTION	PART NO.	QTY
1	ACCESS TILE	ACC-S-3024CRV	1
2	Tek™ ANCHOR	ACC-S-ANCH	16
3	TACTILE BOND AND SEAL	TBS-010	1 ea

NOTE: FASTENERS AND 1 TUBE OF TACTILE BOND AND SEAL ARE INCLUDED WITH TILE

REFERENCE DRAWINGS

DWG. NO.	DESCRIPTION

No.	DATE	REVISION	APPR.

SCALE 1"=1'-0" U.N.O. FULL SIZE ONLY

DESIGNED	KES	DATE
DRAWN	VS	07/15/2024
CHECKED	DD	

PROJECT MANAGER	
TRADE	PART NO.
DETECTABLE WARNING SURFACE	ACC-S-3024CRV

MATERIAL POLYMER COMPOSITE

SUBJECT **ACCESS TILE®**
TRUNCATED DOME, DETECTABLE WARNING TACTILE SURFACE

PROJECT **ACCESS TILE®**
TRUNCATED DOME, DETECTABLE WARNING TACTILE SURFACE
30"x24" CURVED SURFACE APPLIED INLINE DOME TILE DRAWING.

DRAWING NO.	REV. NO.
ACC-S-3024CRV	Ø