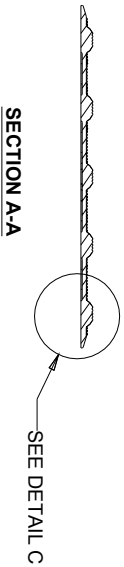
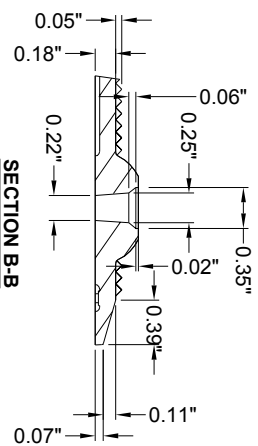
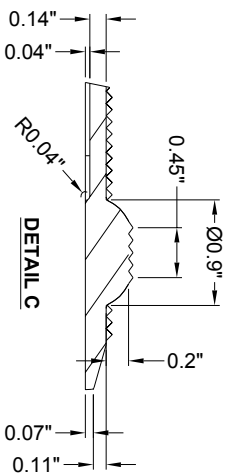
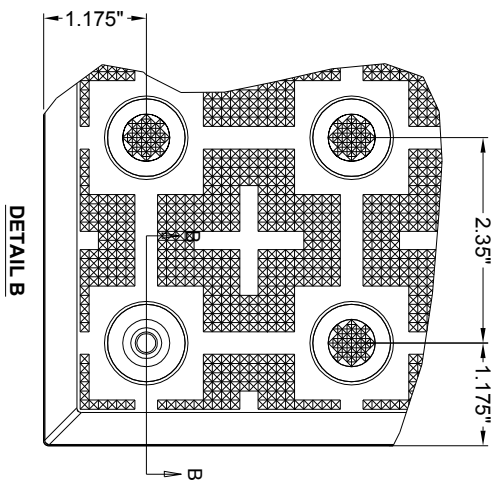
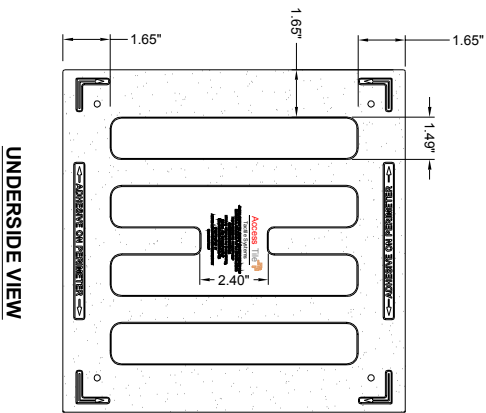
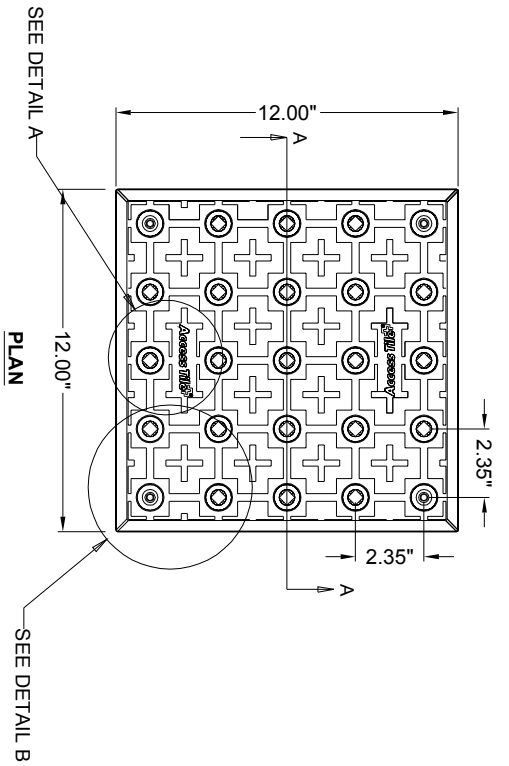


1'x1'

**SURFACE APPLIED
2.35" DOME SPACING**

www.AccessTile.com 888-679-4022



© Access Products Inc. **ACCESS TILE, ACCESS AND THE THREE AND TWO DIMENSIONAL DESIGNS ON THE TILE BETWEEN DOMES AND ON DOMES ARE TRADEMARKS OF ACCESS PRODUCTS INC. IN THE UNITED STATES, CANADA AND INTERNATIONALLY.** MANUFACTURED AND DISTRIBUTED UNDER LICENSE BY ACCESS WORLD PRODUCTS INCORPORATED
www.accessworld.com
KENNETH E. SZEKELY

MATERIAL LIST

ITEM	DESCRIPTION	PART NO.	QTY
1	ACCESS TILE	ACC-S-1X1	1
2	Tpk™ ANCHOR	ACC-S-ANCH	4
3	TACTILE BOND AND SEAL	TBS-010	1 ea

NOTE: FASTENERS ARE INCLUDED WITH TILE

REFERENCE DRAWINGS

DWG. NO.	DESCRIPTION

No.	DATE	REVISION	APPR.

SCALE 1"=1'-0" UNLESS OTHERWISE NOTED

DESIGNED	DATE
KES	10/09/2008
DRAWN	DATE
RNG	10/15/2008
CHECKED	DATE
KES	

PROJECT MANAGER	PART NO.
	ACC-S-1X1

ACCESS TILE®

TRUNCATED DOME, DETECTABLE WARNING TACTILE SURFACE

ACCESS TILE®

TRUNCATED DOME, DETECTABLE WARNING TACTILE SURFACE

1'x1 SURFACE APPLIED
INLINE DOME TILE DRAWING.

DRAWING NO.	REV. NO.
ACC-S-1X1	Ø