

2'X3'

**SURFACE APPLIED  
2.35" DOME SPACING**

www.AccessTile.com 888-679-4022



Tactile Systems

www.AccessTile.com

Access Products Inc

© Access Products Inc. AND THE THREE AND TWO DIMENSIONAL DESIGNS ON THE TILE BETWEEN DOMES AND ON DOMES ARE TRADEMARKS OF ENGINEERED SYSTEMS INC., UNITED STATES, CANADA AND INTERNATIONALLY MANUFACTURED AND DISTRIBUTED UNDER LICENSE BY ACCESS WORLD PRODUCTS INCORPORATED  
www.accesstile.com  
KENNETH E. SKENEY

**MATERIAL LIST**

ITEM DESCRIPTION	PART NO.	QTY
1 ACCESS TILE	ACC-S-2X3	1
2 1/4" ANCHOR	ACC-S-ANCH	8
3 TACTILE BOND AND SEAL	TBS-010	1 ea

NOTE: FASTENERS AND 1 TUBE OF TACTILE BOND AND SEAL ARE INCLUDED WITH TILE

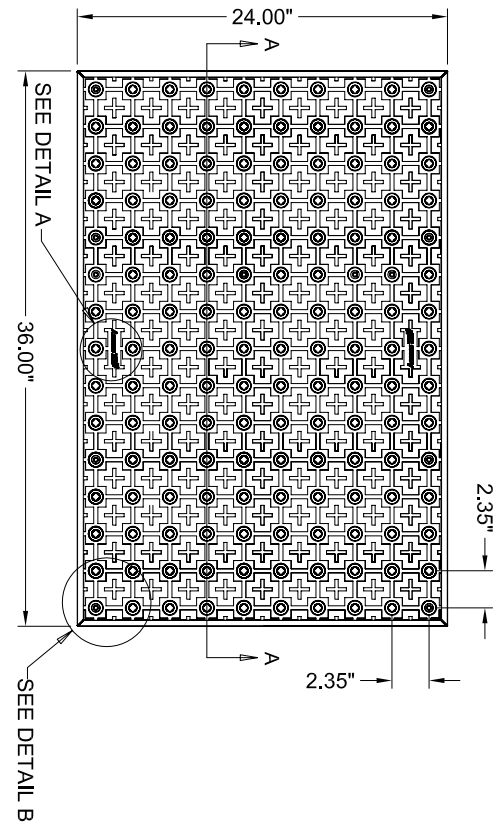
**REFERENCE DRAWINGS**

DWG. NO.	DESCRIPTION

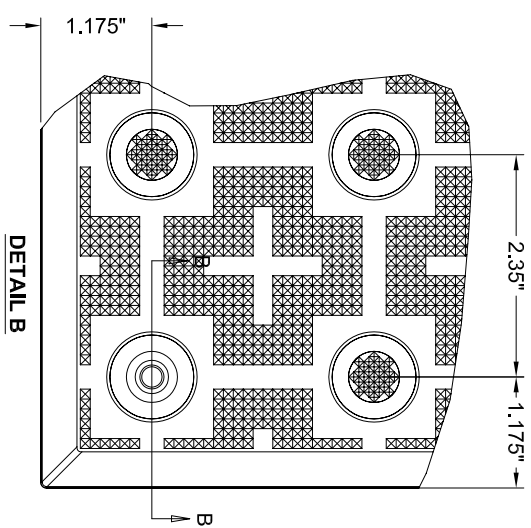
NO.	DATE	REVISION	APPR.

SCALE	1"=1'-0" UNLESS OTHERWISE NOTED
DESIGNED	KES
DRAWN	RMD
CHECKED	KES
PROJECT MANAGER	
TITLE	
MATERIAL	
SUBJECT	

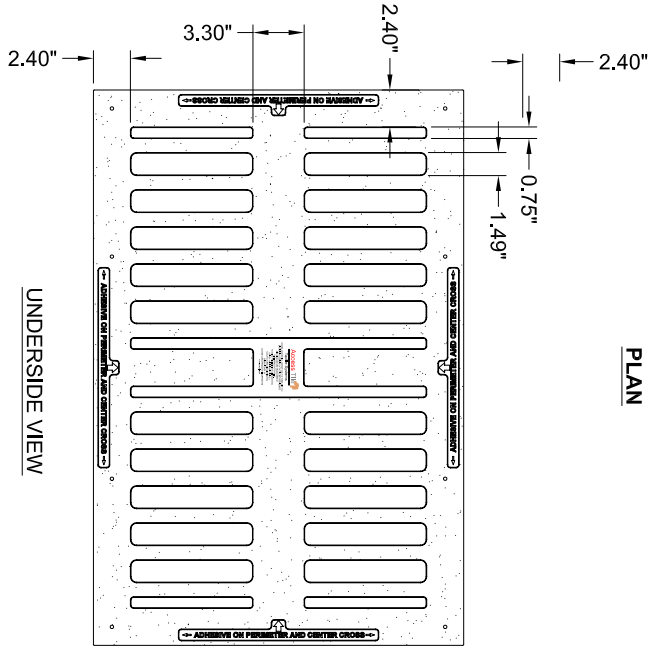
DATE	10/09/2008
DATE	10/15/2008
PART NO.	ACC-S-2X3
PART NO.	ACC-S-2X3
<b>ACCESS TILE</b>	
TRUNCATED DOME, DETECTABLE	
WARNING TACTILE SURFACE	
2X3 SURFACE APPLIED	
INLINE DOME TILE DRAWING.	
DRAWING NO.	ACC-S-2X3
REV. NO.	0



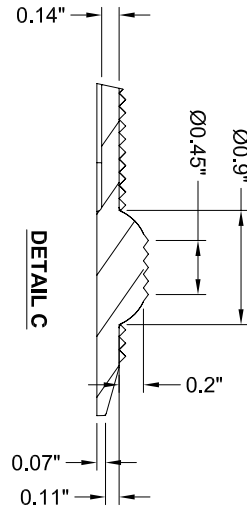
**PLAN**



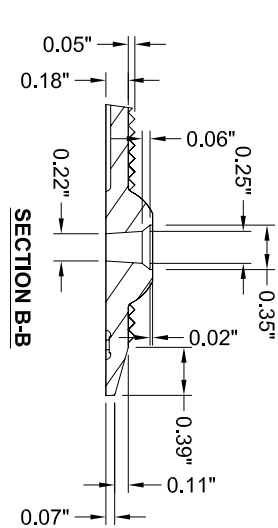
**DETAIL B**



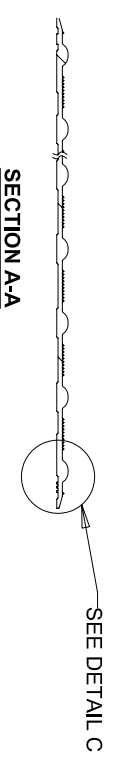
**UNDERSIDE VIEW**



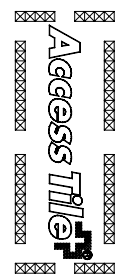
**DETAIL C**



**SECTION B-B**



**SECTION A-A**



**DETAIL A**