

# RADIUS

## SURFACE APPLIED RADIUS TILE 2.35" DOME SPACING

AccessTile.com

Access Products Inc.

ACCESS TILE, ACCESS AND THE THREE AND TWO DIMENSIONAL DESIGNS ON THE TILE BETWEEN DOMES AND ON DOMES ARE TRADEMARKS OF ENGINEERED SYSTEMS INC.  
PATENTS PENDING IN THE UNITED STATES, CANADA AND INTERNATIONALLY.  
MANUFACTURED AND DISTRIBUTED UNDER LICENSE BY ACCESS WORLD PRODUCTS INCORPORATED.

### MATERIAL LIST

ITEM DESCRIPTION	PART NO.	QTY
1 ACCESS TILE	ACC-S-3024CRV	1
2 1/4" ANCHOR	ACC-S-ANCH	16
3 TACTILE BOND AND SEAL	TBS-010	1 ea

NOTE: FASTENERS AND 1 TUBE OF TACTILE BOND AND SEAL ARE INCLUDED WITH TILE

### REFERENCE DRAWINGS

DMG. NO. DESCRIPTION

No.	DATE	REVISION	APPR.

SCALE: 1"=1'-0" UNLESS OTHERWISE NOTED

DESIGNED	DATE
KES	2/20/2013
DRAWN	DATE
VS	06/28/2014
CHECKED	DATE
DD	
PROJECT MANAGER	DATE

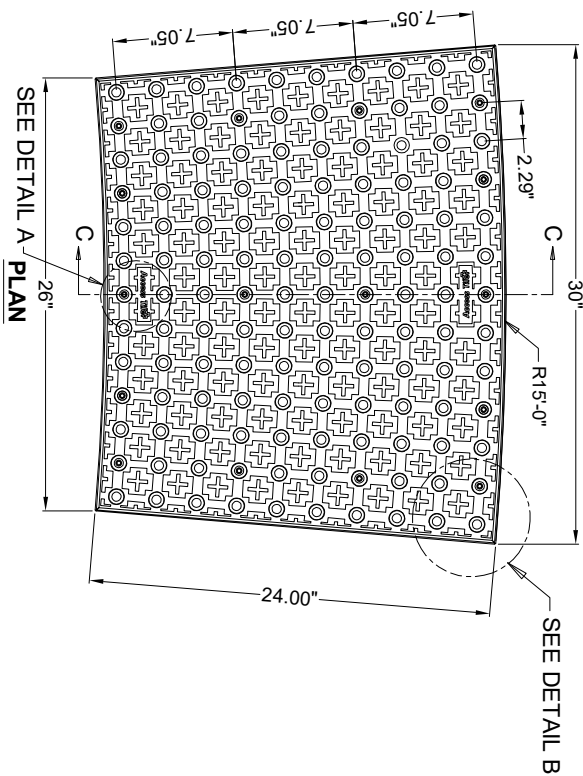
TRADE	PART NO.
DETECTABLE WARNING SURFACE	ACC-S-3024CRV
MATERIAL	
POLYMER COMPOSITE	
SUBJECT	

**ACCESS TILE**  
TRUNCATED DOME, DETECTABLE WARNING TACTILE SURFACE

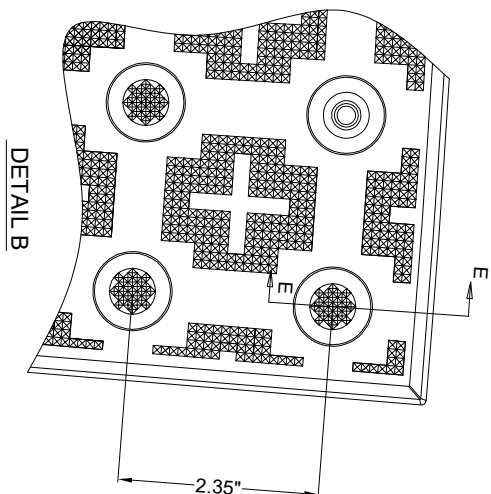
**ACCESS TILE**  
TRUNCATED DOME, DETECTABLE WARNING TACTILE SURFACE  
30"x24" CURVED SURFACE APPLIED IN-LINE DOME TILE DRAWING.

DRAWING NO. ACC-S-3024CRV

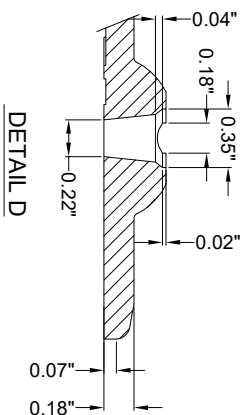
REV. NO.  $\emptyset$



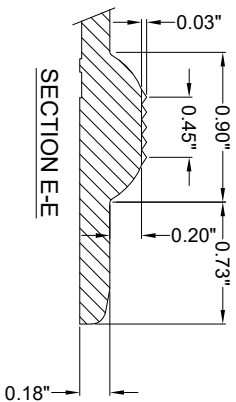
15" RADIUS WITHOUT CUTTING



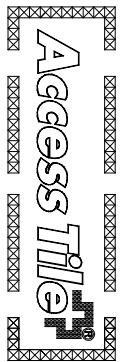
DETAIL B



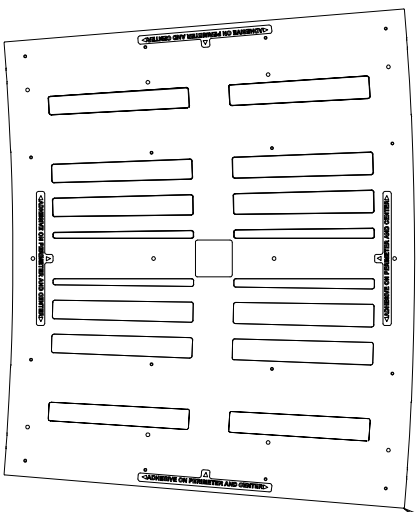
DETAIL D



SECTION E-E



DETAIL A



UNDERSIDE VIEW

SECTION C-C

SEE DETAIL D

NOTE: STANDARD TILE RADIUS - 15'-0"