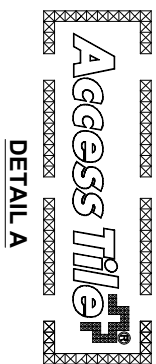
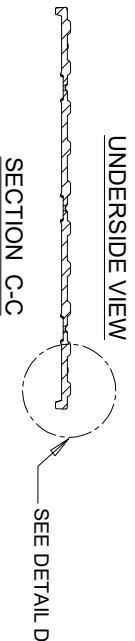
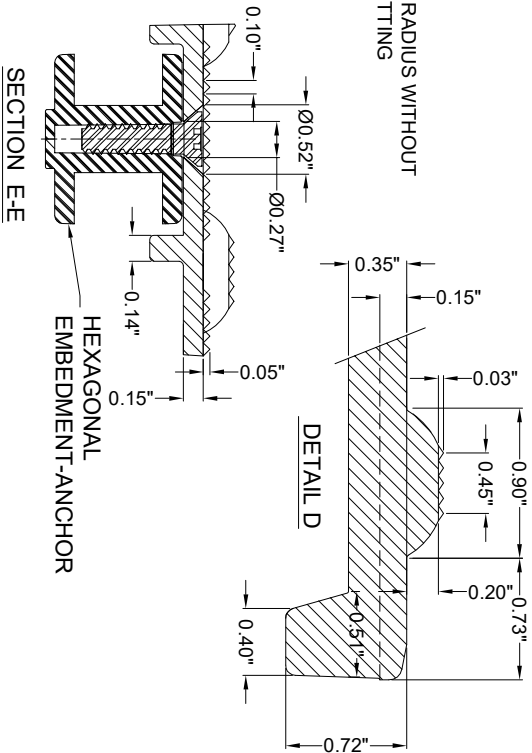
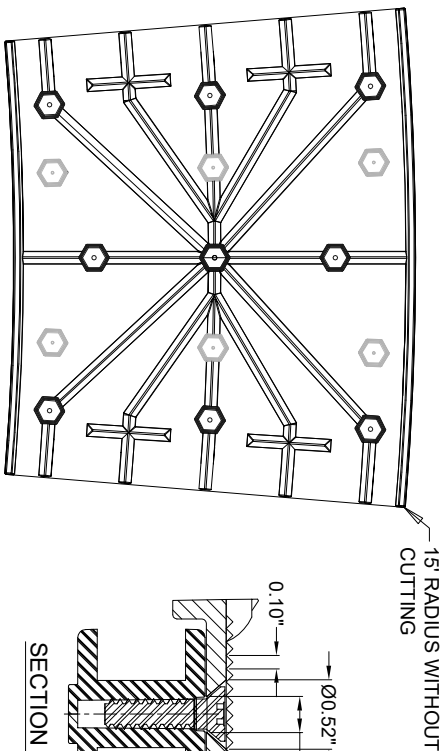
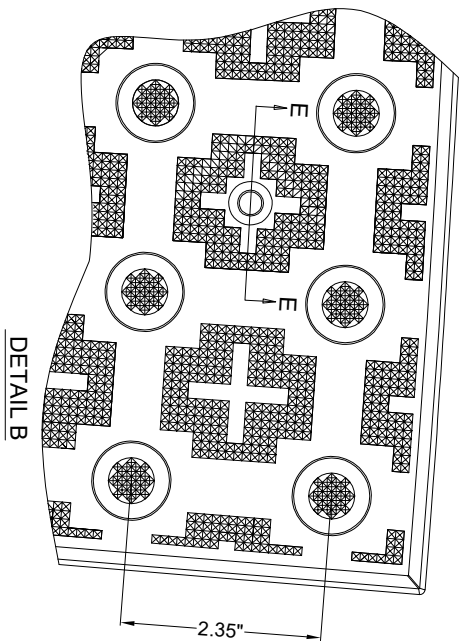
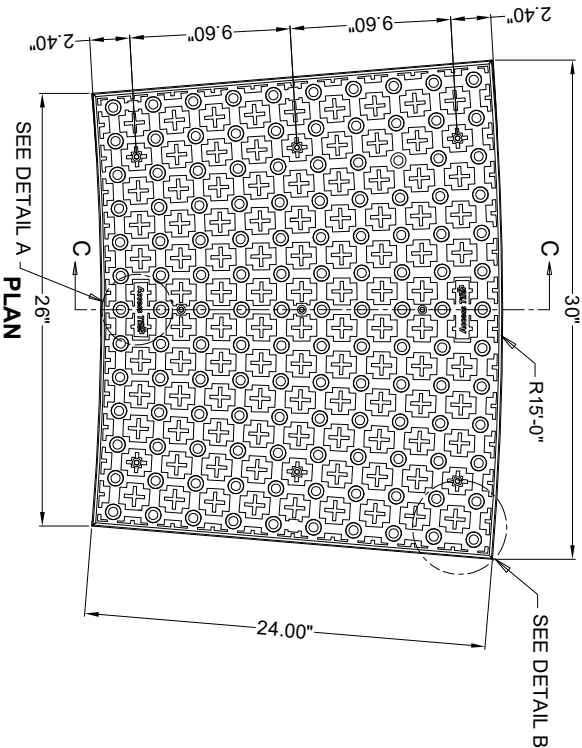


RADIUS

REPLACEABLE CAST IN PLACE RADIUS TILE 2.35" DOME SPACING



NOTE: STANDARD TILE RADIUS - 15"-0"

AccessTile.com

Access Products Inc.

ACCESS TILE, ACCESS AND THE THREE AND TWO DIMENSIONAL DESIGNS ON THE TILE BETWEEN DOMES AND ON DOMES ARE TRADEMARKS OF ENGINEERED SYSTEMS INC.
PATENTS PENDING IN THE UNITED STATES, CANADA AND INTERNATIONALLY.
MANUFACTURED AND DISTRIBUTED UNDER LICENSE BY ACCESS WORLD PRODUCTS INCORPORATED.

MATERIAL LIST

ITEM NO.	DESCRIPTION	PART NO.	QTY
1	ACCESS TILE	ACC-R-3024CRV	1
2	ANCHOR ASSEMBLY	ACC-R-ANCH	9

NOTE: ANCHORS ARE INCLUDED AND ASSEMBLED ON TILE

REFERENCE DRAWINGS

DWG. NO. DESCRIPTION

No.	DATE	REVISION	APPR.

SCALE: 1"=1'-0" UNLESS OTHERWISE NOTED

DESIGNED	DATE
KES	2/20/2013
DRAWN	CHECKED
VS	06/28/2014
PROJECT MANAGER	

TRADE	PART NO.
DETACHABLE WARNING SURFACE	ACC-R-3024CRV
MATERIAL	
POLYMER COMPOSITE	
SUBJECT	
ACCESS TILE®	
TRUNCATED DOME, DETECTABLE	
WARNING TACTILE SURFACE	

ACCESS TILE®
TRUNCATED DOME, DETECTABLE
WARNING TACTILE SURFACE

PROJECT: **ACCESS TILE®**
TRUNCATED DOME, DETECTABLE
WARNING TACTILE SURFACE
30"x24" CURVED REPLACEABLE CAST IN PLACE INLINE DOME TILE DRAWING.
DRAWING NO. ACC-R-3024CRV REV. NO. Ø